



Medical & Laboratory Systems

- Patient Care Areas
- Medical/Dental Offices
- Supply Rooms
- Maintenance Areas
- Emergency Rooms
- Labs/Pharmacy Areas
- Long Term Care
- Gift Shops

Approved for
"Clean Room"
Environments



**MADE
IN THE
U.S.A.**

The Unislat Wall system has unlimited uses...
Let your imagination be your guide!

www.unislat.com

Unislat Medical & Laboratory Systems

Approved for
"Clean Room"
Environments

Unislat Wall System

With an assortment of trays, baskets, bins, and shelves, the Unislat Wall System is a user friendly yet highly specific way to maximize utilization and storage of costly medical supplies regardless of packaging type or size. Unislat Wall Systems are constructed from a lightweight, durable plastic which won't chip or dent like metal or wood walls.

- Easy Do-it-Yourself installation or installed by Unislat
- Eliminates the need for obstructive carts, saves limited floor space
- Visually appealing - improves appearance of room
- Low maintenance - easy to clean and keep dust-free
- Shelves, bins, and baskets can be easily reconfigured to accommodate change.
- Bins/Baskets can be color coded for optimum inventory control & product recognizability.
- Approved by the Michigan State Health Inspector
- Approved under Joint Commission Requirements for Infection Prevention and Control (IC)



Linen Storage



Suture Supply Storage



Supply Storage



Pharmaceutical Supplies

Accessories

Many accessories are available to make the Unislat Medical & Laboratory System and the Store 'n Go Caddy unique to a variety of applications. Visit our website or call for a catalog.

Unislat Store 'n Go Caddy

Mobile, portable and customizable, the Store 'n Go caddy allows easy access to equipment and supplies kept in handy baskets/bins or hidden inside. When not in use, just roll it out of the way.

- Customize with baskets or bins
- Door access to store and conceal materials inside
- Two styles available: with one Easy-grip handle and door for inside access to store and conceal items and another with three Easy-grip handles
- Five casters allow stability and multi-directional mobility. Foot operated brake instantly locks to hold the Caddy firmly in place
- No assembly required



Acrylic Bins



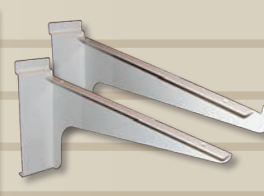
Catheter Holders



Cup Holders



Colored Bins



Shelving Brackets



Wire Shelves

Stainless Steel Carts

Unislat also offers stainless steel carts and work stations to meet a variety of medical or hospital requirements. Each one can be customized to meet any specification. A number of options are available such as casters, shelves, handles and more.



Contact Your Local Sales Representative or Call:

616-844-4211 • Fax: 616-844-4288
13660 172nd Avenue • Grand Haven, Michigan 49417



www.unislat.com

